



DIAMOND STONE INSTRUCTION MANUAL



INSTRUCTIONS FOR

- **ROUTER BIT SHARPENER**
- **CREDIT CARD STONE**
- **SINGLE HANDLE FILE**
- **8" BENCH STONE**



FREE 5 YEAR EXTENDED WARRANTY

Register Online
mpower-tools.com/warranty

MPOWER Diamond Stones are intended to be used to sharpen steel, tungsten carbide & high speed steel tools. For both professional and domestic use.

SAFETY

Please read and understand these instructions before use.

Users must be competent in using Woodworking equipment before using our products.

All cutting edges are very sharp and care must be taken to prevent injury.

GUIDELINES

MPOWER Diamond Stones allow fast, clean stock removal, with less effort and time required and can be used on a variety of cutting edges.

When using MPOWER Diamond Stones, certain general guidelines should be followed to ensure the stones give lasting performance under normal conditions.

Follow the hints and tips explained here to help maximise the life of your Diamond Stone:

- All tooling should be cleaned before sharpening. Resin build-up should be removed with Resin Cleaner and a wire brush.

- Use with MPOWER Lapping Fluid to prevent the diamonds becoming clogged with swarf.
- MPOWER Diamond Stones require a 'break-in' period. Initially the diamond will feel coarse and will smooth overtime.
- Do not apply too much pressure.
- The diamond is extremely abrasive so what would normally take 5-10 minutes on an oilstone may take approximately 20 seconds on the Diamond Stone.
- Dry the Diamond Stone thoroughly after use. Any wet steel filings left on the stone will cause surface rust to form.

TECHNICAL DATA

Code	Grade	Grit	Micron
Router Bit	Fine	600	25
Sharpener	Coarse	300	50
Credit Card	Fine	600	25
Stone	Coarse	300	50
Single	Fine	600	25
Handle File	Coarse	300	50
8" Bench Stone	Super Fine	1200	15
	Coarse	300	50

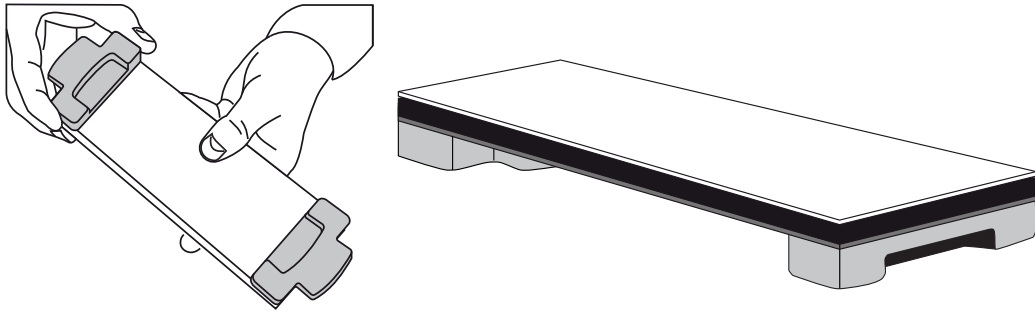
MAGNETIC NON-SLIP Diamond Stone HOLDERS (PAIR) - Optional

Inc. with MPOWER Bench Stone.
Not inc. with Credit or Router Bit
Sharpener.

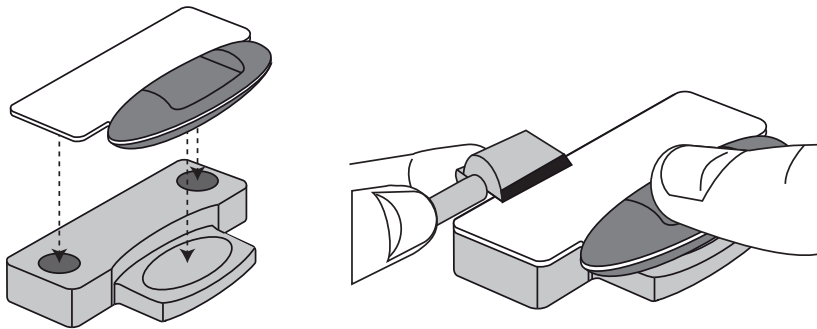
Note: Also fits other brands of credit card
and Stones.

MOUNTING YOUR DIAMOND STONES

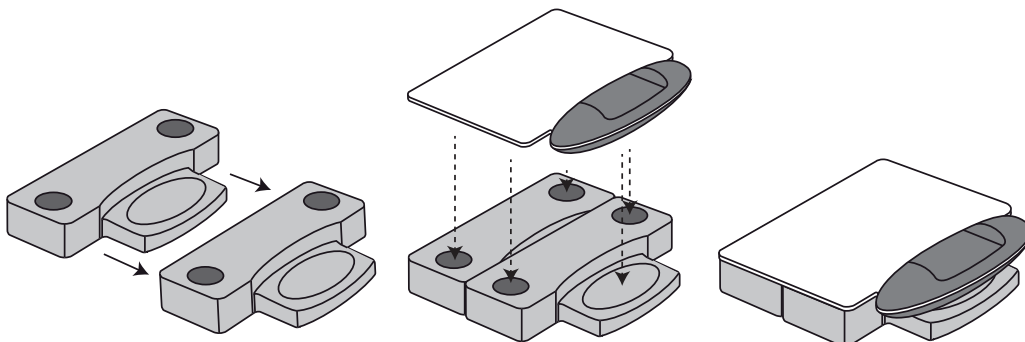
8" Bench Stone



Router Bit Sharpener



Credit Card Stone



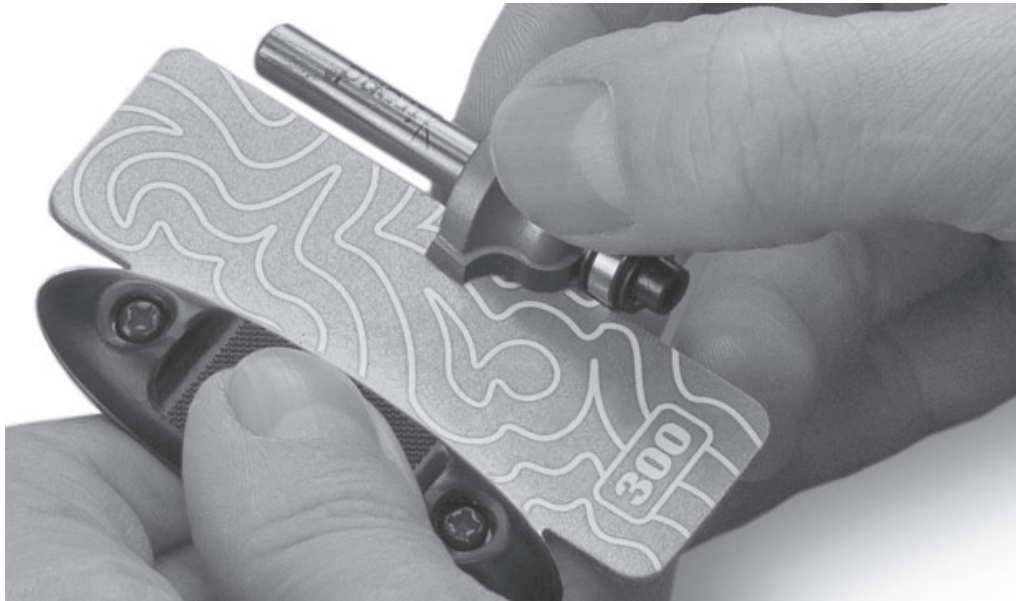
OPERATION    

Router Bits/Cutters 

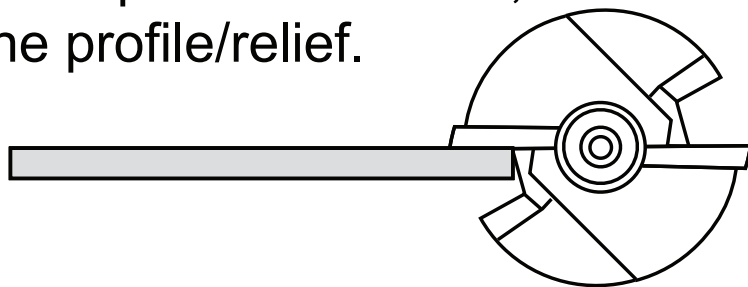
Suggested: Router Bit Sharpener

Fine: For Tungsten Carbide.

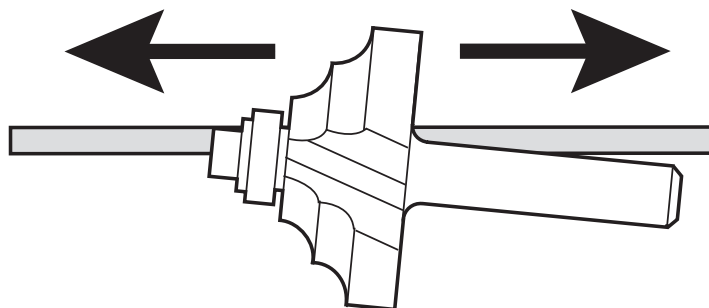
Coarse: For High Speed Steel.



- Always sharpen the flat face, never the profile/relief.



- Slide the cutter with slight pressure along the whetstone. Repeat same number of strokes on each cutting edge.



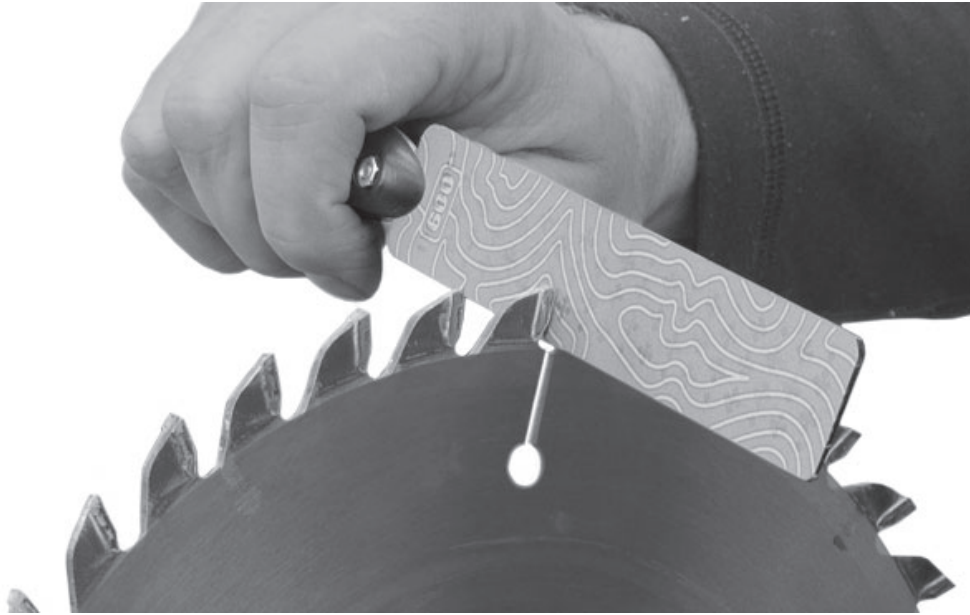
Circular Sawblades



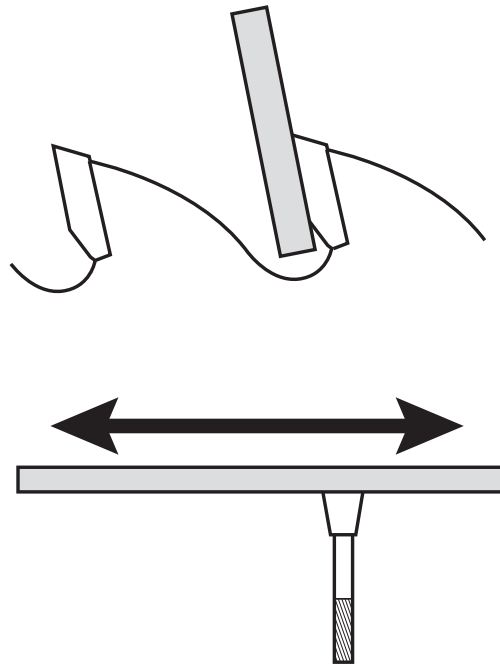
Suggested: Single Handle File or Router Bit Sharpener

Fine: For regular maintenance

Coarse: For dull blades



- Keep the diamond surface flat to the face of saw tooth.
- Use a few light, smooth, back and forth strokes on each tooth.
- Repeat the same number of strokes on each tooth.
- Mark the first tooth sharpened with chalk or masking tape to avoid honing a second time.

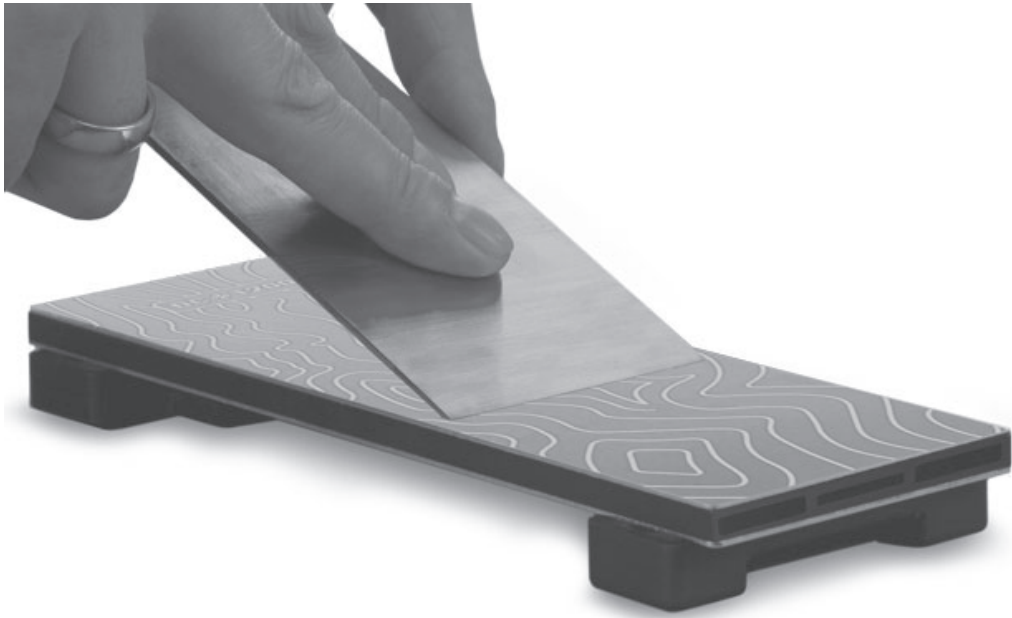


Chisel/Plane Irons

Suggested: 8" Bench Stone

Fine: For edge honing

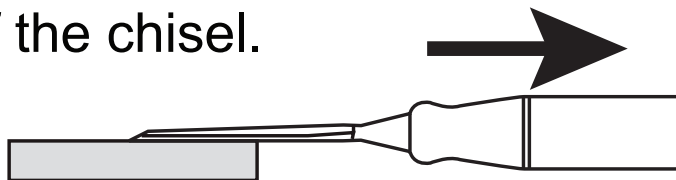
Coarse: Areas of minor damage



- Keep the bevel of the chisel/plane iron flat on the stone.



- Finish with one light stroke on the back of the chisel.



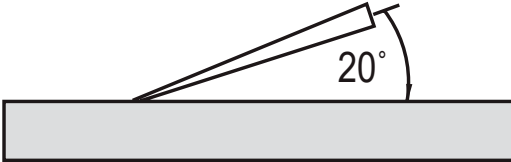
Knives

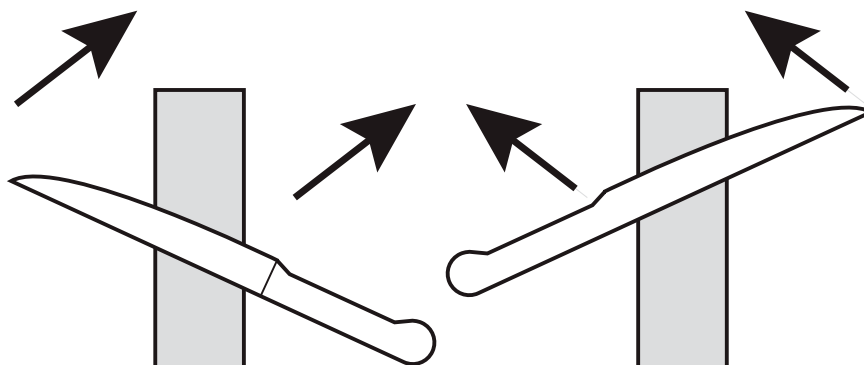
Suggested: 8 " Bench Stone

Fine: To keep a razor edge

Coarse: To restore an edge



- Keep the same angle as the knife bevel on the Diamond Stone.
- The angle is 20° for most knives. 
- Stroke away from the body, alternating on each said of the knife.



- Light strokes will produce a finer edge.

Small pointed tools and gouges ⚠

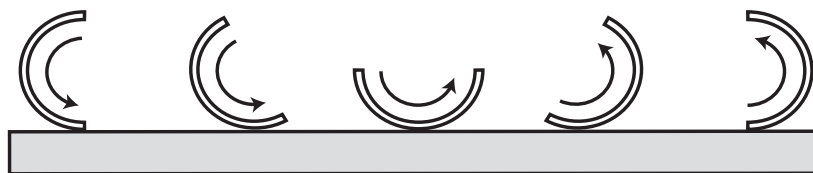
Suggested: Credit Card Stone

Fine: To maintain an edge

Coarse: To restore a dull edge



- Keep the bevel on the back of the gouge flat on the Diamond Stone.
- Gently roll the tool bevel to hone.



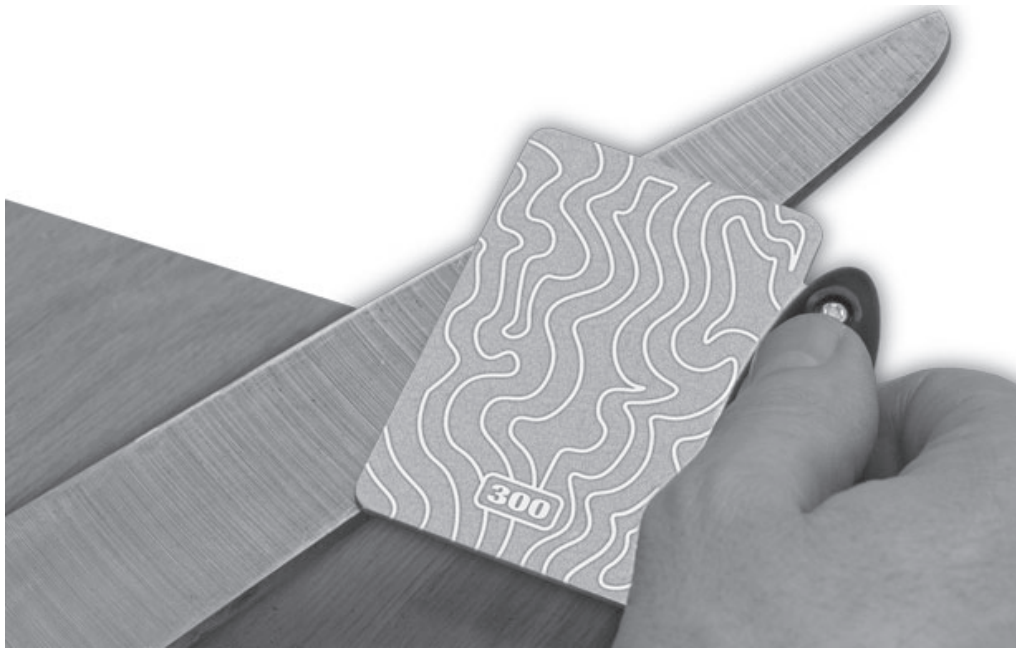
- Small tools should be honed as per chisels, pointed tools should be honed as per gouges.

Shears and Scissors ⚠

Suggested: Credit Card Stone

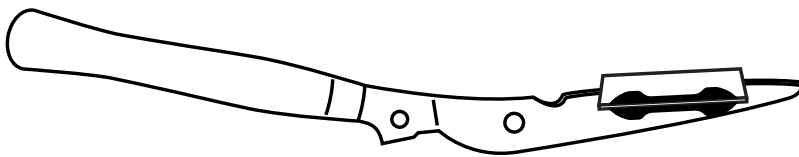
Fine: To hone the edge

Coarse: To prepare the edge



Dismantle the shears to work on the cutting blade.

- Lay the Diamond Stone flat on the cutting edge bevel.



- Stroke smoothly towards the tip of the blade.
- Lay the stone flat on the sliding face and remove the burr with a light stroke (as per the main image above).

ACCESSORIES

- **Non-slip, Magnetic Diamond Stone Holder (pair)**
- **Diamond Lapping Fluid** - (New from June 2021)
- **Abrasive Polishing Wax** - (New from June 2021)

Diamond Stone MAINTENANCE

Continual satisfactory operation depends upon proper tool care and regular cleaning.

Cleaning

- Clean with a damp cloth or Eraser Block. (Inc with Bench Stone)

Storage

- Ensure Diamond Stones are stored separately.
- Do not store the Diamond Stones in damp conditions.

ENVIRONMENTAL PROTECTION



- Re-cycle raw materials instead of disposing as waste.
- Packaging should be sorted for environmental-friendly euro-cycling.

- The product and its accessories at the end of its life should be sorted for environmental-friendly recycling.

GUARANTEE

All MPOWER products are guaranteed against any defects in either workmanship or material, except products that have been damaged due to improper use or maintenance.

POLICY

Our policy of continuous improvement means that specifications may change without notice. MPOWER Tools Limited cannot be held liable for any material rendered unusable, or for any form of consequential loss.



Manufactured by MPOWER Tools Ltd

Tel: 0044 (0)1980 629 526

Email: technical@m-powertools.com

Email: customercare@m-powertools.com

Web: www.mpower-tools.com